

Connective Tissue

Fibre Type

- Collagen Fibres
- Reticular Fibres
- Elastic Fibres

Constituents

- Fibroblast
- Adipocytes
- Mesenchymal Stromal Cells
- Macrophages
- Mast Cells
- Lymphocytes
- Plasma Cells
- Ground Substance

Connective Tissue Proper

- Loose
- Dense

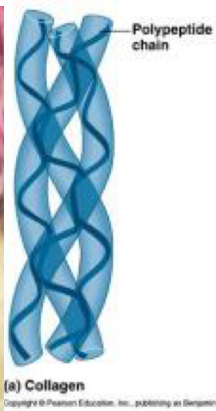
Supporting Connective Tissue

- Cartilage
- Bone

Fluid Connective Tissue

- Blood
- Lymph

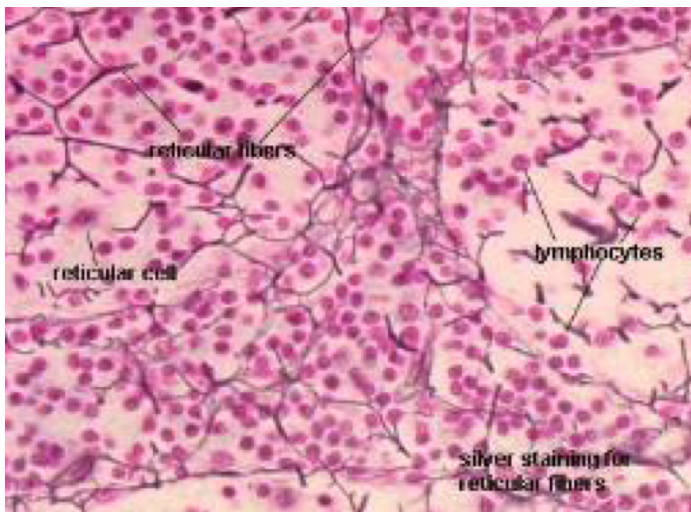
Collagen Fibre



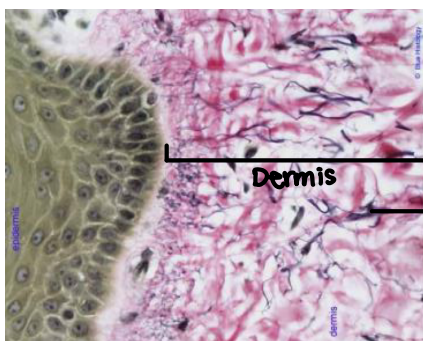
Connective Tissue Fibres



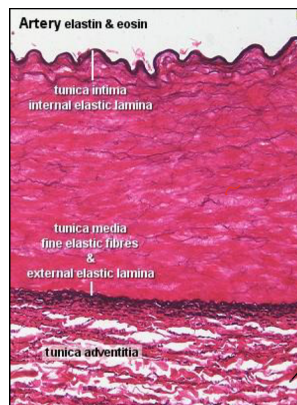
Reticular Fibres



Elastic Fibres

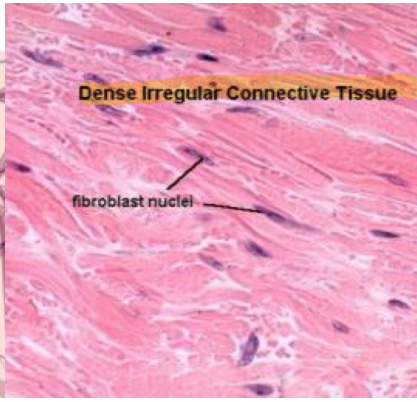
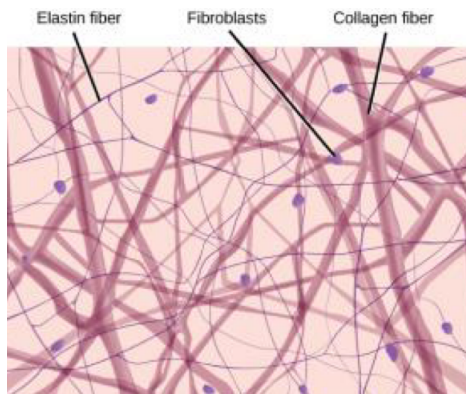


Ribbon-like elastin fibre

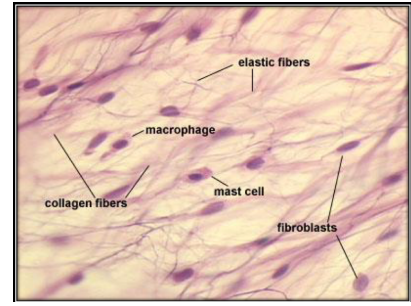


Elastin Fibre

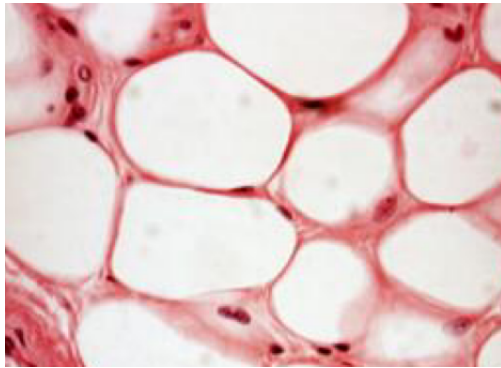
Fibroblast



- Nucleus centrally placed and elliptical
- Elongated with processes lying in fibres

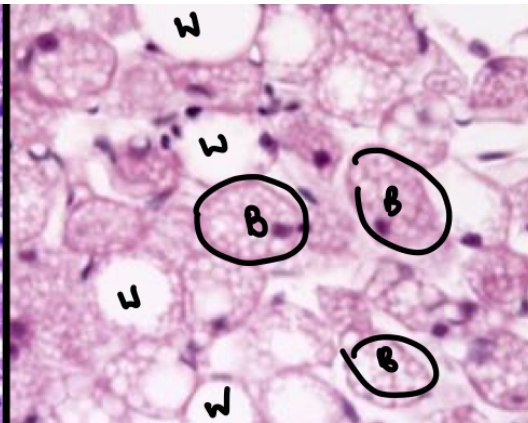
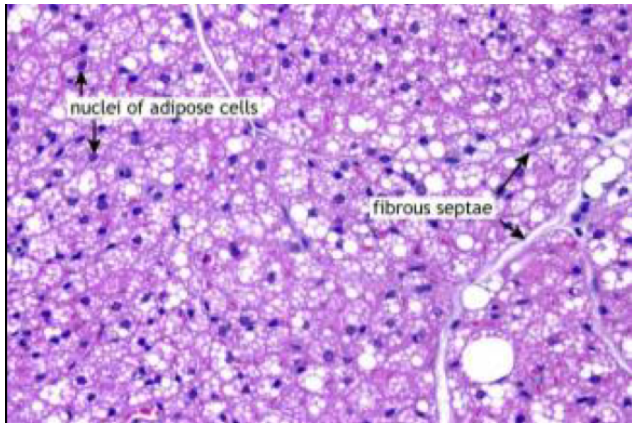


White Adipocytes



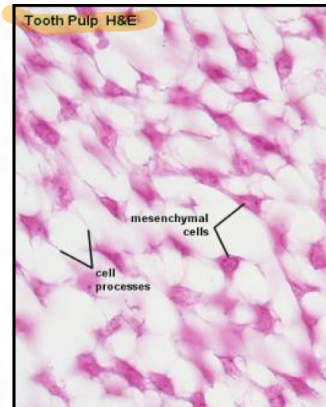
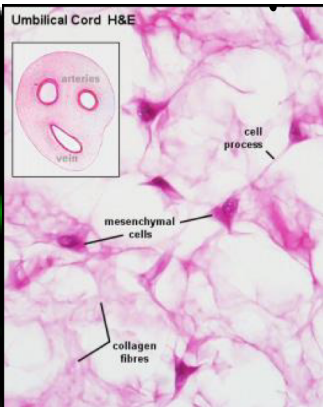
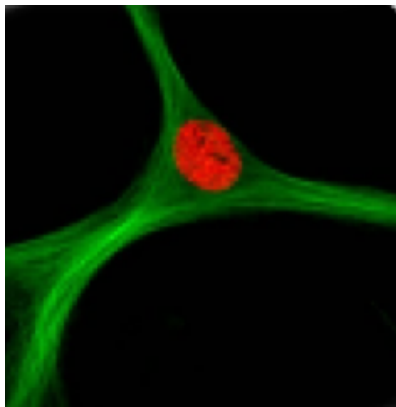
- Cells unilocular
- Peripheral Nucleus
- White

Brown Adipocytes



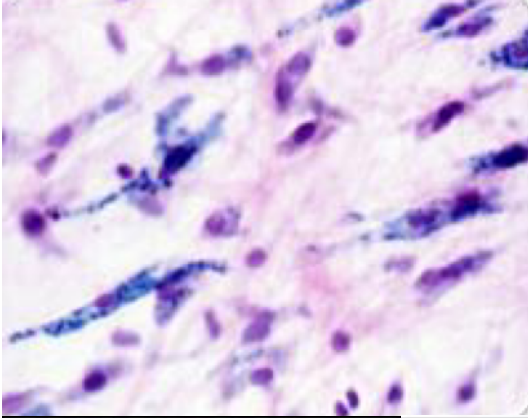
- Smaller multilocular cells
- Brown
- Nuclei centrally placed

Mesenchymal Stroma Cells

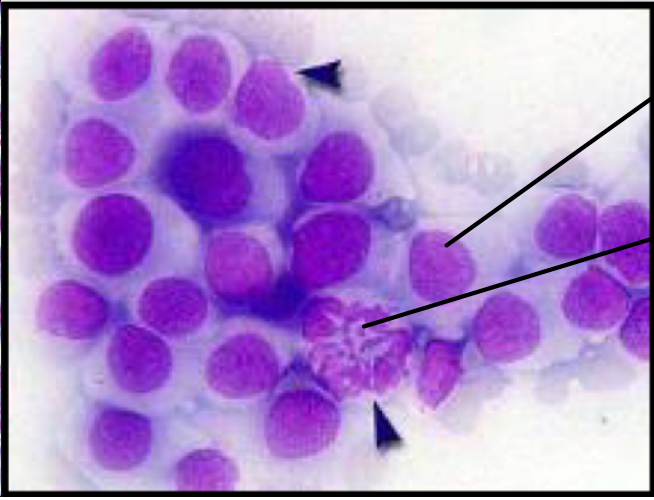
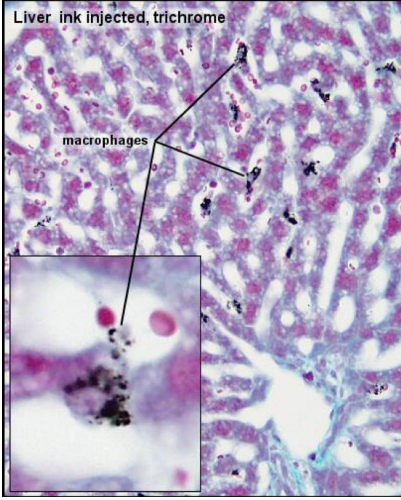


- Star or spindle shape
- Oval Nucleus
- Lie along capillaries

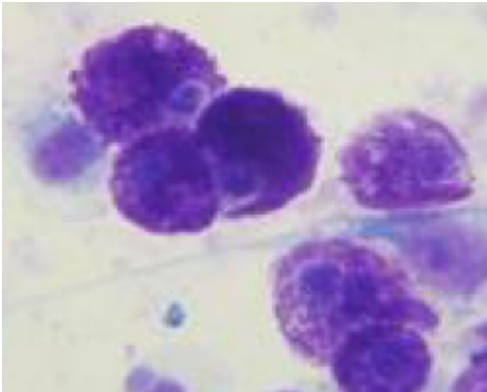
Macrophages



- Stellate / fusiform
- Along Fibres
- Irregular nucleus



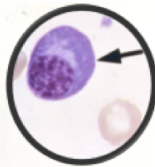
Mast cells



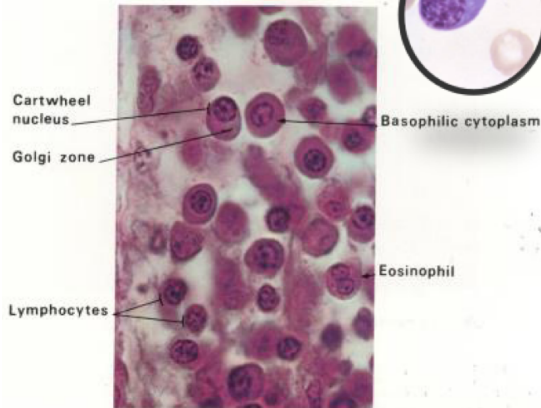
- Basophilic granules
- Large cells
- Small round nucleus

Plasma Cells

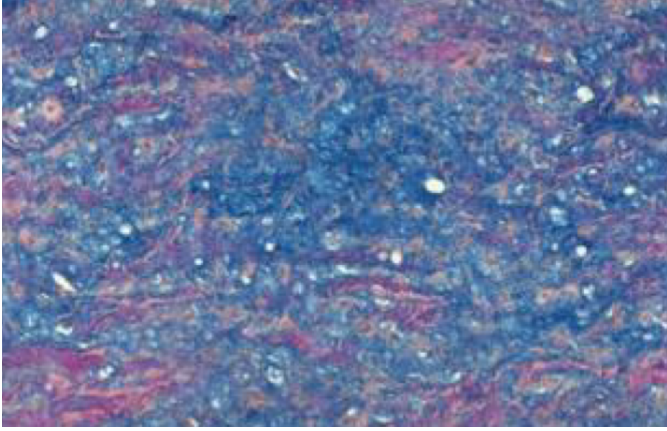
PLASMA CELLS
Lamina propria
jejunum



- looks like blueberry
- Ovoid basophilic cytoplasm
- 'cart-wheel' nucleus
- High number in lymph node & digestive tract

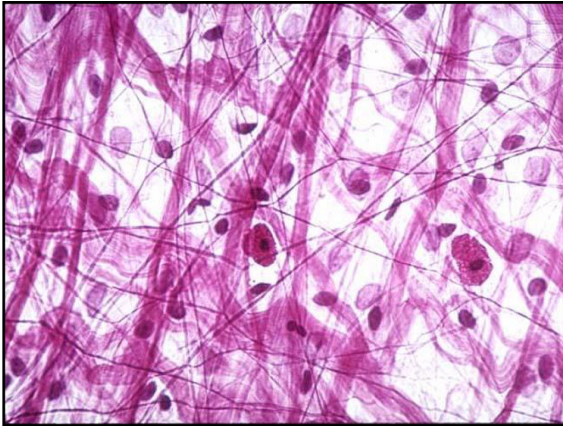


Ground Substance

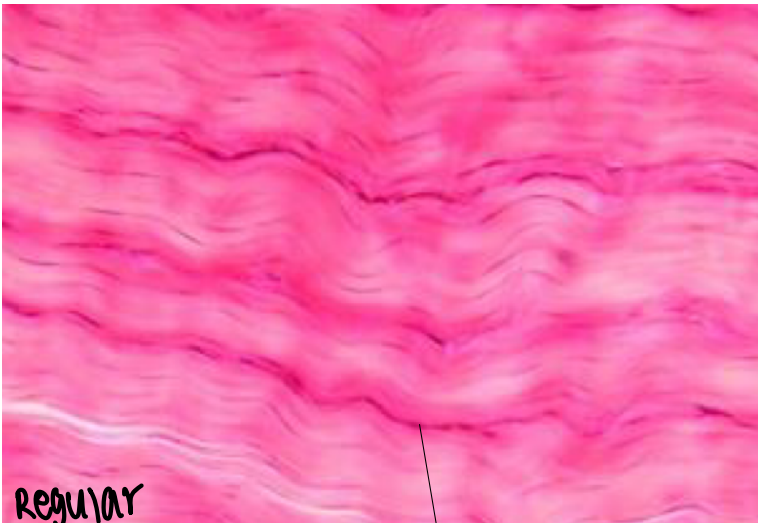


- clear in H&E
- Blue = ground substance
- Pink = collagen fibre

Loose Connective Tissue



Regular and Irregular Dense Connective Tissue



nucleus of fibroblast

